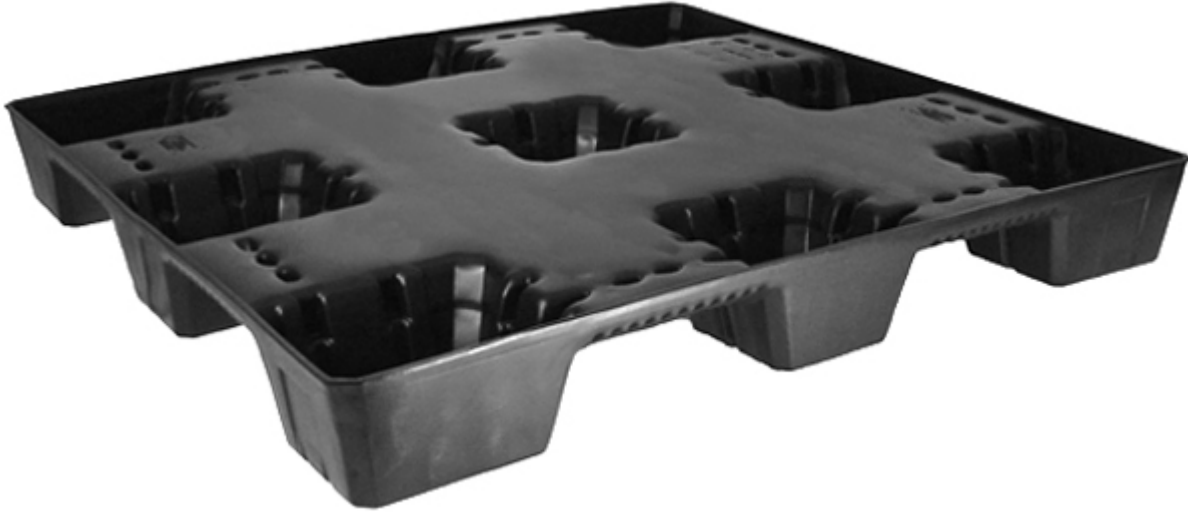
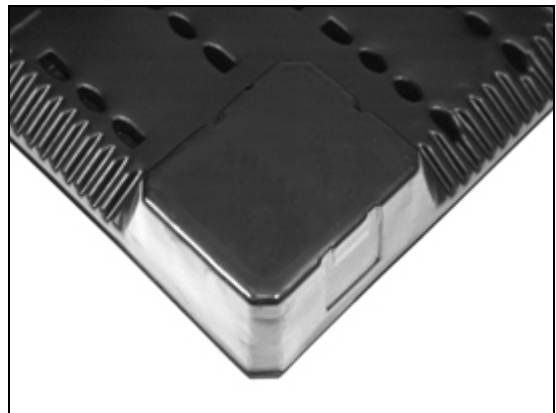


Uni-Pallet® 45 x 48



Uni-Pallet® Features

- *New 45° corner design*
- *Four-way fork entry* for ease in handling with Fork Trucks and Pallet Jacks
- *Lightweight*
- *Nestable* which results in reductions in warehousing costs and freight costs
- *Drain holes* in legs to ease in cleaning and deter any collection of liquid
- *Easy to clean* flat deck surface
- *Impervious to weather* – including extreme heat or cold and UV Ray protection
- *100 percent recyclable*
- *Twin Sheet construction* eliminates the need for repair and reduces product damage
- *Conveyable*
- *Extremely durable*



Uni-Pallet® Options

- Steel inserts in either or both directions
- Anti-skid surfaces available
- Custom Color(s)
- Identification Stripes
- Identify your fleet with custom name plates and company logo
- Available in various weights depending upon load requirements

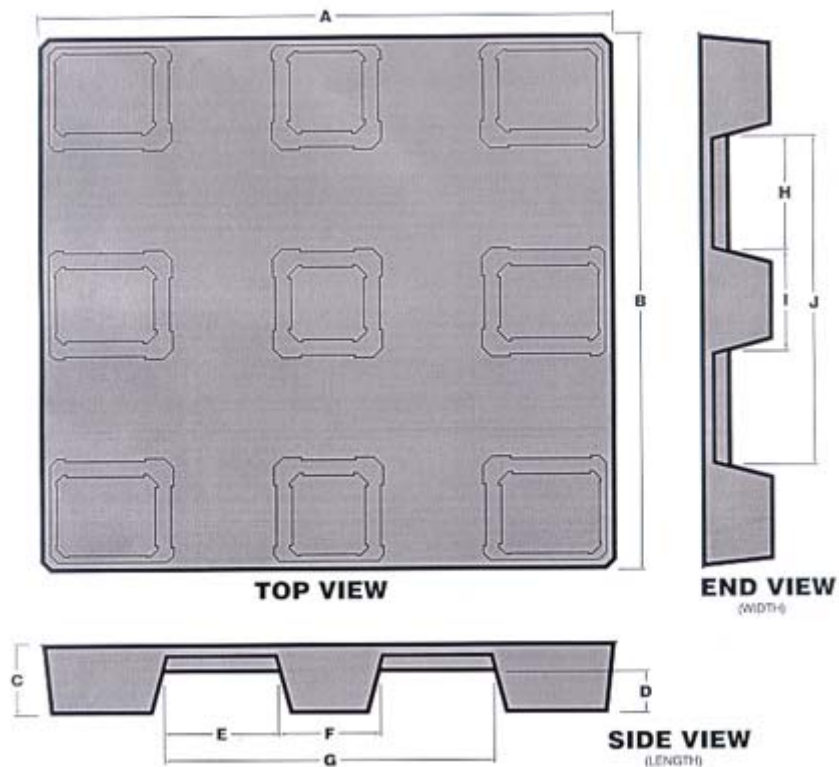
The Uni-Pallet offers outstanding economy along with its strength and durability. The space saving stacking feature and its lightweight combine to reduce a shipper's cost per trip. This produces the ultimate benefit, a quick return on investment.



We Invent Solutions.®

1-877-Shuert 1

Uni-Pallet® 45 x 48



Uni-Pallet is Shuert Industries' solution to distributor's needs: A lightweight, reusable, nine-leg, 4-way entry, twin sheet pallet. Manufactured from BA50-100, high-molecular weight, high-density polyethylene co-polymer for maximum product performance.

Pallet Dimensions				
A	Overall Length	48"	F Center Leg/Length	8.5"
B	Overall Width	45"	G Overall Fork Opening/Length	27.5"
C	Overall Height	6.0"	H Fork Opening/Width	9.5"
D	Fork Opening/Height	3.5"	I Center Leg/Width	8.5"
E	Fork Opening/Length	9.5"	J Overall Fork Opening/Width	27.5"

Warehousing & Shipping Information	
•	Pallets nest on 2.0" centers
•	Truckload Quantity: 1344 Pallets (53' x 98' x 110') 28 Stacks of 48 Pallets
•	Truckload Quantity: 1248 Pallets (48' x 98' x 110') 26 Stacks of 48 Pallets