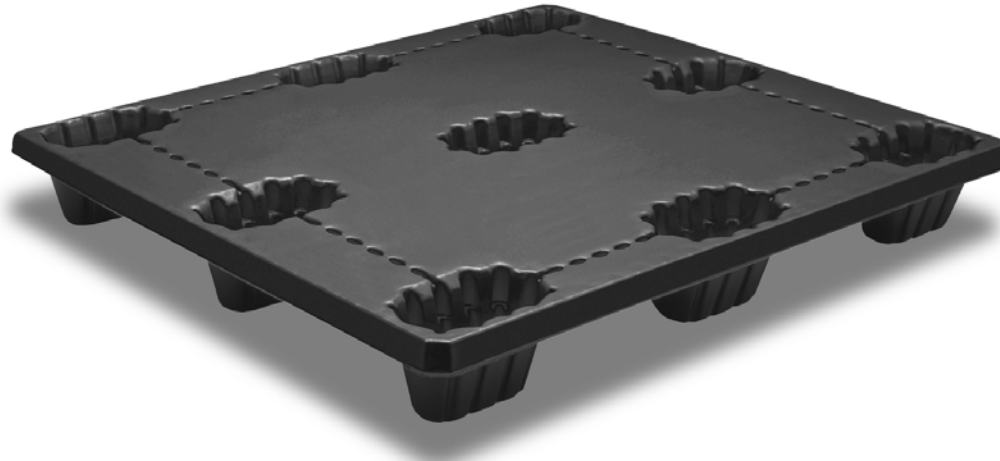
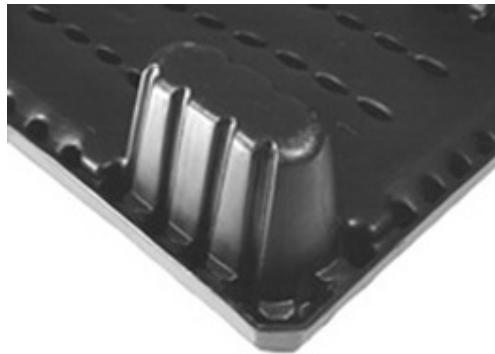


Light Weight Plastic Shipping Pallet



Pallet Features

- New shock absorbing perimeter design virtually eliminates side splitting due to the rigors of side impact and fork truck handling
- New 45° corner design
- Four-way fork entry for ease in handling with Fork Trucks and Pallet Jacks
- Drain holes in legs to ease in cleaning and deter any collection of liquid
- Easy to clean flat deck surface
- Conveyable
- Twin Sheet construction eliminates the need for repair and reduces product damage
- Nestable with other plastic pallets (twin sheet and injection molded pallets) so you can upgrade your fleet to the Uni-Pallet
- Lightweight (16 lbs.)
- Nestable which results in reductions in warehousing costs and freight costs
- Impervious to weather – including extreme heat or cold and UV Ray protection
- 100 percent recyclable
- Extremely durable
- Manufactured from BA50-100, High-Molecular Weight, High-Density Polyethylene Co-Polymer for maximum product performance



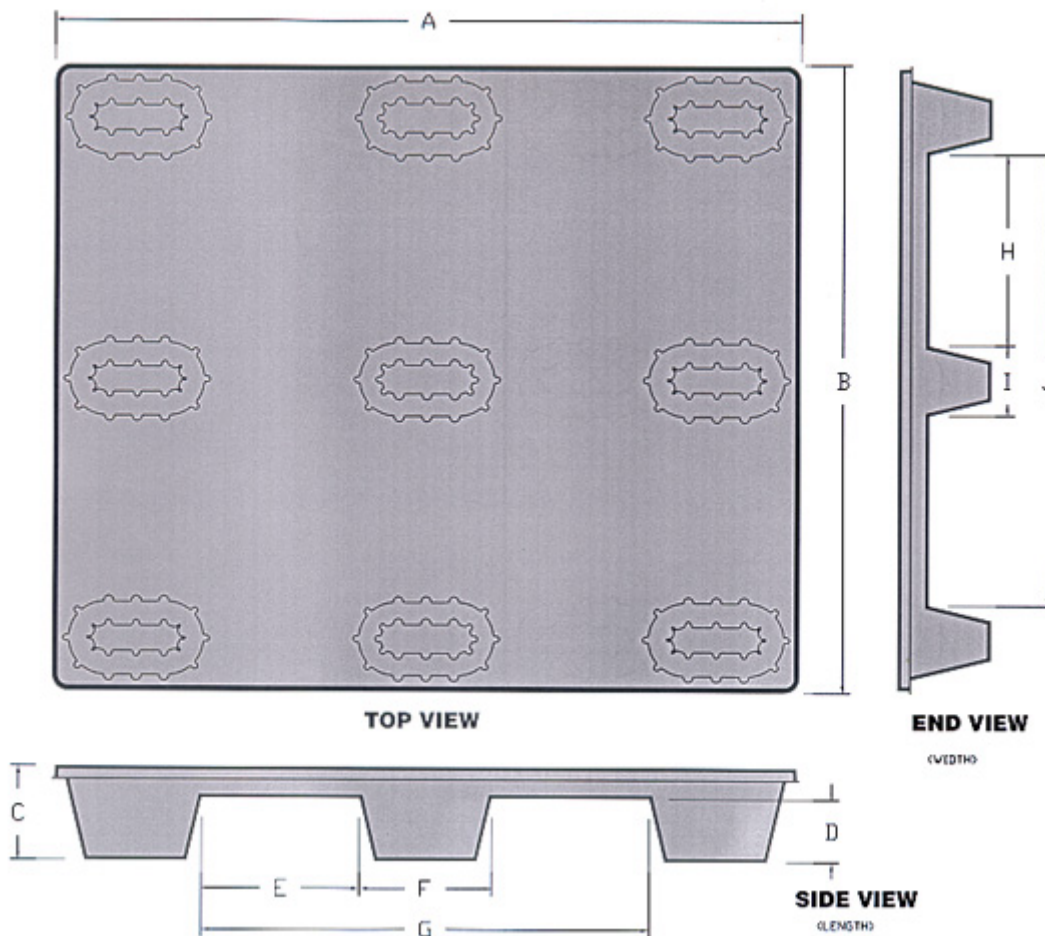
The Pallet offers outstanding economy along with its strength and durability. The space saving stacking feature and its light weight combine to reduce a shipper's cost per trip. This produces the ultimate benefit, a quick return on investment. Perfect for one-way shipments.



We Invent Solutions.®

1-877-Shuert 1

Light Weight Plastic Shipping Pallet



Pallet Dimensions & Specifications				
A	Overall Length	48"	F Center Leg/Length	8.5"
B	Overall Width	40"	G Overall Fork Opening/Length	28.5"
C	Overall Height	6.125"	H Fork Opening/Width	11.750"
D	Fork Opening/Height	4"	I Center Leg/Width	4.5"
E	Fork Opening/Length	10"	J Overall Fork Opening/Width	28"
	Pallet Weight	16 #	Pallet Color	Black
*	Static Load Capacity	5,000 #	* Dynamic Load Capacity	2,000 #

*Weight capacity may vary +/- depending on the nature of the load, i.e. load dimensions, center of gravity, stacking configuration and handling method.

Warehousing & Shipping Information	
•	Pallets nest on 2.0" centers
•	Truckload Quantity: 1440 Pallets (53' x 98" x 110") 30 Stacks of 48 Pallets
•	Truckload Quantity: 1344 Pallets (48' x 98" x 110") 28 Stacks of 48 Pallets
•	20'ft. Sea Container: 378 Pallets (20' x 92" x 88") 9 Stacks of 42 Pallets
•	40'ft. Standard: 840 Pallets (40' x 92" x 88") 20 Stacks of 42 Pallets
•	40'ft. High Cube: 960 Pallets (40' x 92" x 102") 20 Stacks of 48 Pallets